

Delivering Quality Environmental Contamination Data

Waste Classification & Acceptance

The Landfill Directive

The Landfill Directive places controls on waste disposal. These controls include requirements to follow the waste acceptance procedures and criteria that have been agreed by the Council of the European Union and are laid out in Council Decision 2003/33/EC.

Before a waste can be accepted at a landfill site, the landfill operator must be satisfied that the waste meets their permit conditions, the waste acceptance procedures (WAP) and waste acceptance criteria (WAC). If you decide that disposal to landfill is the best management option for your waste, you must follow these procedures or the operator may refuse to accept your waste.

Level 1 — Basic Characterisation: Before you can send a load of waste to landfill, you need to know its composition and properties so you can determine whether it is suitable for acceptance and at which class of site.

Level 2 — Compliance Testing: If you produce waste that is 'regularly arising', e.g. from an industrial process, you must periodically check the waste to ensure that those properties have not changed.

Level 3 — On-Site Verification: The operator must check each delivery at the landfill to verify that it is the expected waste and that it has not been contaminated in storage or transport.

Waste Acceptance Criteria (WAC)

The Council Decision specifies waste acceptance criteria for inert, non-hazardous and hazardous waste. These are:

- Wastes which may be accepted at a landfill for inert waste without testing
- Limits on the leachability of certain parameters
- Limits on the organic content of the waste

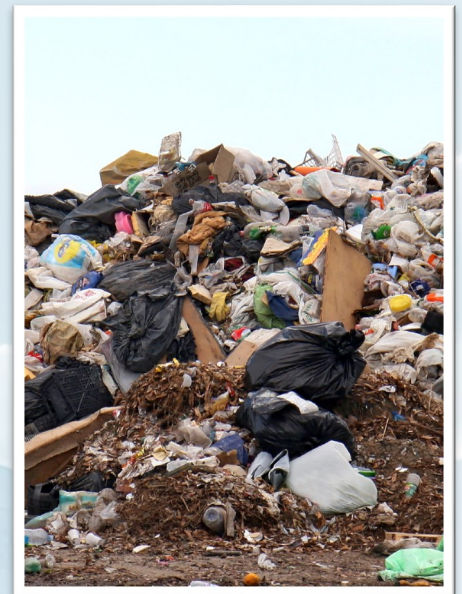
There are no numerical WAC limits on landfills for non-hazardous waste.

The WAC limits can not be used to make an assessment of whether a waste is hazardous. These are for a different purpose and must not be confused.

The List of Wastes Regulations implemented the European Waste Catalogue and you should use these Regulations as a starting point in determining whether your waste is hazardous.

They contain three types of entry:

- **Absolute hazardous entries**—These wastes are deemed to be hazardous regardless of their composition or concentrations of dangerous substances in them.
- **Mirror entries**—These wastes may be hazardous or non-hazardous, according to the concentration of dangerous substances in them.
- **Absolute non-hazardous entries**—These wastes are deemed to be non-hazardous



Waste Classification & Acceptance...

WAC Special Provisions

There are a number of special provisions and these relate to:

- Stable, non-reactive hazardous wastes deposited in landfills for non-hazardous wastes, in cells not used for the deposit of biodegradable wastes
- Asbestos wastes
- Gypsum wastes
- Underground storage
- Inert Waste.

Even with the above in place waste acceptance can be extremely difficult to judge.

How ELAB Can Help

If you believe that the waste you need to dispose of should go to a landfill then you need to establish if the waste meets the acceptance criteria of the disposal site. ELAB provide the following standard test suites to BS 12457:

WAC – Full Waste Suite

WAC – Inert Waste Suite

WAC – Hazardous Waste Suite

Additionally we undertake testing to support Waste Characterisation Procedures

Logistics

To help you prepare your samples, call and discuss your needs with our Technical team who will provide the appropriate containers in thermally insulated boxes for free transportation to our labs. These can be requested outside of normal working hours via our website using the appropriate form under the Logistics menu.

Free sample collection is also available so don't hesitate to call and book a local collection or National courier service to transport your samples safely and securely for processing. We also provide an online collection request form on our website under the Logistics menu so you can place your collection request at your convenience.

Contacts

Brian Perry

Client Liaison Manager

Tel: 01424 718618 or 0845 900 7004

Mob: 07956 550806

Email: bperry@elab-uk.co.uk

Mike Varley

Operations Manager

Tel: 01424 718618 or 0845 900 7004

Email: mvarley@elab-uk.co.uk

Stuart Ballard

Customer Services Officer

Tel: 01424 718618 or 0845 900 7004

Email: cs@elab-uk.co.uk

